

shaw hard surface®

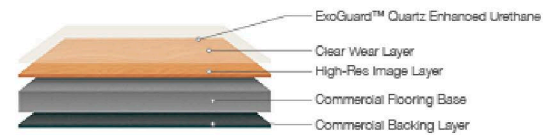
CRETE

High Performance Luxury Vinyl Tile



- Crete offers an update to standard industrial aesthetics - inspired by vintage leather and stained concrete
- Can be used with Uncommon Ground wood looks for an up-to-date mix
- Advanced engineering using innovative raw materials for a safer, stronger construction
- ExoGuard™ Quartz Enhanced Urethane finish and 20 mil commercial wear layer perform in heavy commercial traffic
- 3 mm thickness is more forgiving over uneven subfloors
- Polish is optional for hassle-free maintenance
- FloorScore® certified for low VOCs

Construction



Jeogori are high performance luxury vinyl tiles featuring our exclusive ExoGuard™ quartz enhanced urethane finish for protection against commercial traffic and flexible, polish-optional maintenance. The three millimeter thickness is more forgiving over uneven subfloors and the backing layer ensures dimensional stability across tiles. Updated patterns are printed with state of the art digital imaging technology for maximum clarity.

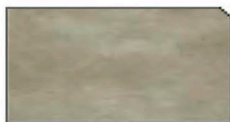
EPD



CE



Colors



03140
Vapor



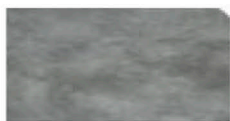
03250
Buckskin



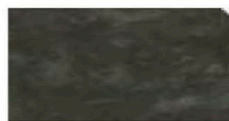
03390
Viridian



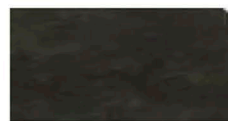
03510
Smoke



03520
Industrial



03570
Cinder



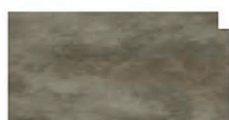
03590
Zinc



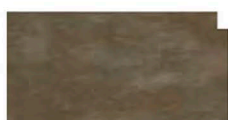
03620
Sunset



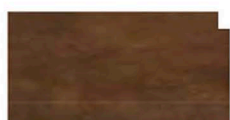
03650
Mesa



03720
Haze



03750
Slate



03770
Leather

Product Specifications

| | |
|-------------------------|-----------------------------------------------------------------------|
| Style Name | Crete |
| Style Number | 0203V |
| Construction | High Performance Luxury Vinyl Tile |
| Class / ASTM F1700 | Class III Printed Film Vinyl Tile, Type A (smooth), Type B (embossed) |
| Wearlayer Thickness | 20 mil or 0.020" (0.5 mm) |
| Overall Thickness | 3 mm or nominal 0.125" |
| Nominal Dimensions | 18" wide x 18" long |
| Actual Size / ASTM F536 | Width: 17.72" or 450 mm, Length: 17.72" or 450 mm |
| Finish | ExoGuard™ Quartz-Enhanced Urethane |
| Backing Class | Commercial Grade |
| Installation | Glue Down |
| Recommended Adhesive | Shaw 4100 or S150 |

Packaging

| | |
|------------------------|-----------|
| Square Feet per Carton | 34.88 sf |
| Pieces per Carton | 16 pcs |
| Weight per Carton | 37.84 lbs |

Testing

| | |
|-------------------------------------|----------------------------------------------------|
| Slip Resistance / ASTM D2047 | >0.65 (wet/dry) |
| Static Load Limit / ASTM F970 | 1500 psi |
| Flexibility / ASTM F137 | Passes |
| Resistance to Heat / ASTM F1514 | Passes |
| Resistance to Light / ASTM F1515 | Passes |
| Resistance to Chemicals / ASTM F925 | Passes |
| Radiant Flux / ASTM E648 | Passes, >0.45 watts/cm ² , NFPA Class I |
| Smoke Density / ASTM E662 | Passes, <450 |

Warranty

10 year limited commercial wear warranty. 10 year under bed warranty when installed with Shaw 4100 or Shaw S150 spray adhesive. Please visit www.shawhardsurface.com for the most current warranty information.

Environmental

| | |
|--------------------|-----------------------|
| Indoor Air Quality | FloorScore® certified |
| LEED Scorecard | EQ4.1, EQ4.3 |



Specifications are subject to nominal manufacturing variance. Material supply and/or manufacturing processes may necessitate changes without notice.